



# **SMART AIR PURIFIER MODEL SOTO-YM**

## **Operation Manual**

Before operating the system, please read this manual thoroughly, and retain it for future reference.

**SOTO** 

## **CONTENTS**

<b>CONSUMER LIMITED WARRANTY</b>	<b>04</b>
<b>SAFETY PRECAUTIONS</b>	<b>05</b>
<b>STRUCTURE AND MAIN PARTS</b>	<b>06</b>
<b>HOW IT WORKS</b>	<b>07</b>
<b>INSTALLATION</b>	<b>08</b>
<b>OPERATION</b>	<b>09-14</b>
Initiate the Device Operation	<b><u>09</u></b>
Scheduling Setting	<b><u>10</u></b>
Filter Service Life	<b><u>11</u></b>
Various Settings	<b><u>12</u></b>
Software Update	<b><u>13</u></b>
The Evolving Trends in Air Pollutants	<b><u>14</u></b>
<b>CARE AND MAINTENANCE</b>	<b>15-17</b>
Filter Replacement	<b><u>16</u></b>
Replacement of LED UV Lamps	<b><u>17</u></b>
<b>TROUBLESHOOTING</b>	<b>18</b>
<b>SPECIFICATIONS</b>	<b>19</b>

## **CONSUMER LIMITED WARRANTY**

SOTO provides the following limited warranty for this device solely if it was originally purchased from SOTO or an authorized dealer.

SOTO warrants that, under normal use and proper maintenance, the device shall be free from defects in materials and workmanship throughout the applicable warranty period. Should any such defects be identified during this period, SOTO reserves the right, at its sole discretion, to repair or replace the device in accordance with the terms specified herein.

SOTO will repair or replace, free of charge, to the original purchaser, any part that is found to be defective in material or workmanship within one (1) year of the date of purchase. This limited warranty does not cover the replacement of expendable or consumable parts such as UV lamps, and other parts subject to normal wear unless they are defective in material or workmanship.

### **This Warranty Shall Not be Applicable If:**

1. Any defects caused or repairs required because of abusive operation, negligence, accident, improper installation or inappropriate use as outlined in the operation manual.
2. Any product tampered with modified, adjusted or repaired by any party other than SOTO.
3. Damaged caused or repairs because of the use with items not specified or approved by SOTO.
4. Any damage caused by external or environmental conditions (such as a fire or an earthquake), including but not limited to the use of voltage other than indicated on the product.
5. Damage caused by incorrect electrical supply, voltage fluctuations, or use of power sources not specified on the product label.
6. Shipping damage occurring after delivery unless otherwise agreed in writing.
7. In situations where the product information fails to correspond to the product, or where adequate valid documentation is absent to prove that the defective product originated from SOTO or an authorized distributor.

## **SAFETY PRECAUTIONS**

To minimize the risk of electric shock, fire, or personal injury, please carefully read and adhere to the following instructions.

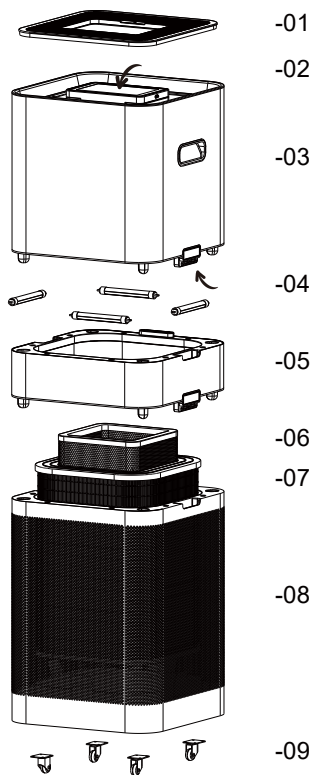
### **Guidelines for the Operating Environment**

1. Use only a 220-240V outlet equipped with a grounded receptacle.
2. Do not operate the unit in enclosed spaces containing flammable, explosive, or toxic vapors, such as those emitted by oil-based paints, paint thinners, or certain mothproofing agents, as this may pose a risk of fire or explosion.
3. Do not operate the unit in excessively high temperatures or humid environments. The optimal operating conditions are a temperature range of 0~40 °C and a relative humidity below 75%.

### **Operation of the Device**

1. Do not operate the unit without first installing the filters. Ensure that all plastic packaging materials are completely removed from the filters prior to operation.
2. The HEPA filter and activated carbon filter should not be washed or reused.
3. Do not operate the unit if the power cord or plug is damaged, or if the connection to the wall outlet is loose.
4. Avoid handling electrical outlets or plugs with wet hands, as this may result in electric shock or fire hazards.
5. Do not disassemble the device unless you are a certified technician, as there is a risk of fire or electric shock.
6. When conducting maintenance, ensure the unit is powered off and disconnected from the power supply.
7. Do not insert fingers or any foreign objects into the air intake or exhaust outlet.
8. Keep hair, loose clothing, fingers, and all other body parts clear of openings and moving components.
9. Avoid direct exposure to UV lamps, as germicidal ultraviolet radiation may result in temporary or permanent eye damage, including the risk of blindness.
10. Do not clean the device with flammable substances, as this may pose a fire hazard.

## STRUCTURE AND MAIN PARTS



- 01 Air Outlet
- 02 Display Control Panel
- 03 Fan Motor System Module
- 04 Module Snap Button
- 05 LED UV Lamp Module
- 06 Activated Carbon Filter
- 07 HEPA Filter
- 08 Filter Module
- 09 Caster

## HOW IT WORKS

This device primarily consists of two air purification modules and a DC brushless fan motor system. The innovative modular architecture enables seamless integration of an additional filter module based on user requirements, enhancing the overall air purification and microbial reduction performance.

Module 1 incorporates a high-efficiency H13-grade HEPA filter and an independent activated carbon filter, which work synergistically to capture airborne particulate matter, adsorb harmful gaseous pollutants, and significantly improve indoor air quality.

Module 2 functions as the air treatment chamber and is equipped with LED UV lamps, which help inactivate microorganisms and support microbial reduction in the airflow.

Module 3 features a high-performance DC brushless motor integrated with a centrifugal fan, ensuring stable and consistent airflow while maintaining high operational efficiency and low noise levels.

### Features

1. Filter modules: The innovative modular design not only facilitates the replacement of filters and LED UV lamps, but also allows for flexible expansion through the addition of a customized filter module based on user requirements, helping to enhance overall air purification efficiency.
2. Android operating system: The device features an intelligent Android-based operating system, providing a user-friendly and intuitive interface, along with support for remote system updates.
3. Durable and high-performance fan motor system: The system integrates a high-quality DC brushless motor with a centrifugal fan, delivering low noise levels and high airflow output performance.
4. Plasma generator: This device incorporates a plasma generator capable of emitting high-concentration plasma, helping to inactivate microorganisms and support improved air quality.
5. Multiple sensors: The device is equipped with multiple integrated sensors that enable accurate monitoring and real-time display of air quality conditions.

## **INSTALLATION**

### **Operational Environment**

1. Power supply condition: Use only a 220-240V outlet equipped with a grounding wire receptacle.
2. Environmental conditions: Temperature range of 0°C to 40°C; Relative humidity below 75%.
3. Device placement: The device must be placed on a stable and level surface during operation.

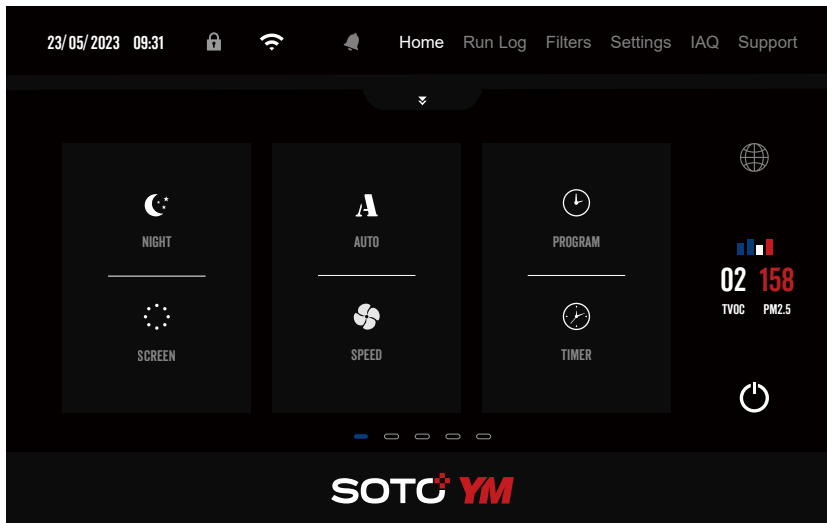
### **Before Operation**

1. Please verify that the unit and all components within the packaging are complete and in satisfactory condition. Should any items be missing or damaged, kindly contact the customer service center promptly.
2. After removing the fan motor module and the LED UV module, carefully remove the filters and detach the protective plastic coverings from the filter surfaces.
3. Prior to initiating operation of the unit, verify that all filters are correctly installed. Should any issues arise, promptly contact the customer service center.

## OPERATION 1

### Initiate the Device Operation

Place the device on a flat, stable surface within the room. Connect the power cord to a nearby electrical outlet. Press the power switch located on the right side of the control display panel and wait for the Android system to initialize and load the main interface.



### Start Operation

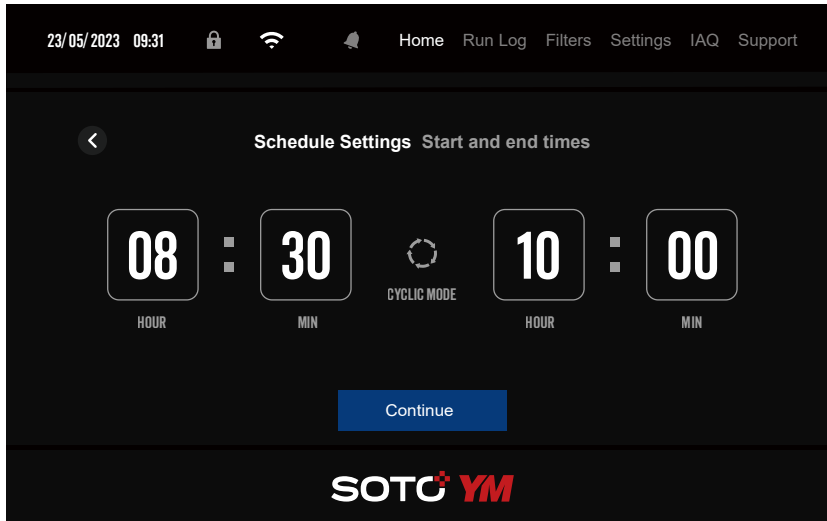
Upon pressing the power button on the main interface, users can set the speed level, operation timer, automatic mode, and night mode, among other settings.

### Change Password

The default system password is **123456**. Users are advised to change their passwords upon first login through the Settings page.

## OPERATION 2 SCHEDULING SETTING

This device is equipped with a scheduled start function, enabling users to program tasks by pressing the PROGRAM button on the main touchscreen interface to configure designated operations.

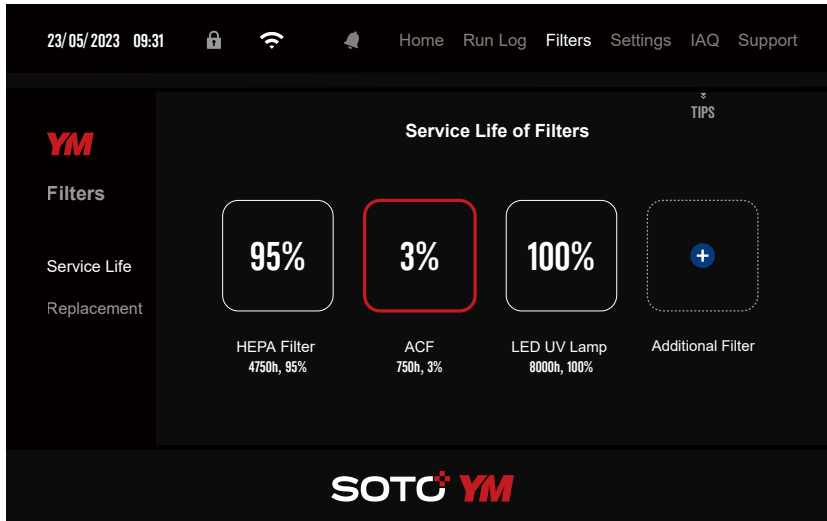


### Schedule a Task

Upon accessing the schedule setting interface, users can set scheduled on / off times, specify weekly repeat and air speeds, and input relevant information such as location and operator names. The system will then automatically generate a schedule list.

## OPERATION 3 FILTER SERVICE LIFE

By selecting the "Filters" option from the navigation menu, users can access detailed information regarding the service life of filters and LED UV lamps.

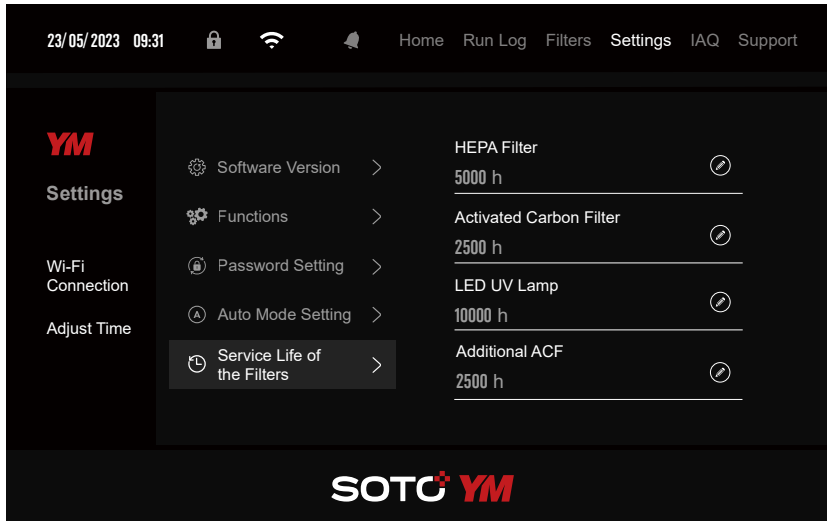


### Add an Additional Filter Module

After adding the filter module, navigate to the filter management interface, select the "Additional Filter" option, and set the service life of the new filter.

## OPERATION 4 VARIOUS SETTINGS

Access the Settings interface through the navigation menu to configure various functional options, including password modification, and the service life of filters and UV lamps.

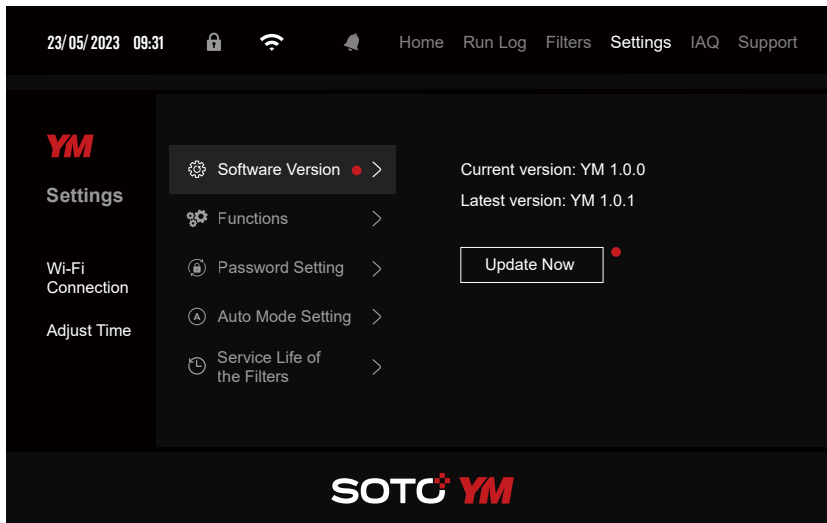


### Adjust the Service Life of the Filters and LED UV Lamps

Users may adjust the service life settings for filters and LED UV lamps according to actual environmental and operational conditions. To access Service Life of the Filters interface, select Settings from the navigation bar.

## OPERATION 5 SOFTWARE UPDATE

The system software supports continuous updates. After accessing the Settings interface, users can select the Wi-Fi Connection option to establish a wireless network connection. In the absence of an available Wi-Fi network, a mobile hotspot may be used as an alternative method to connect the device to the Internet. Once connected, clicking the Update Now button will initiate the installation of the latest software version.

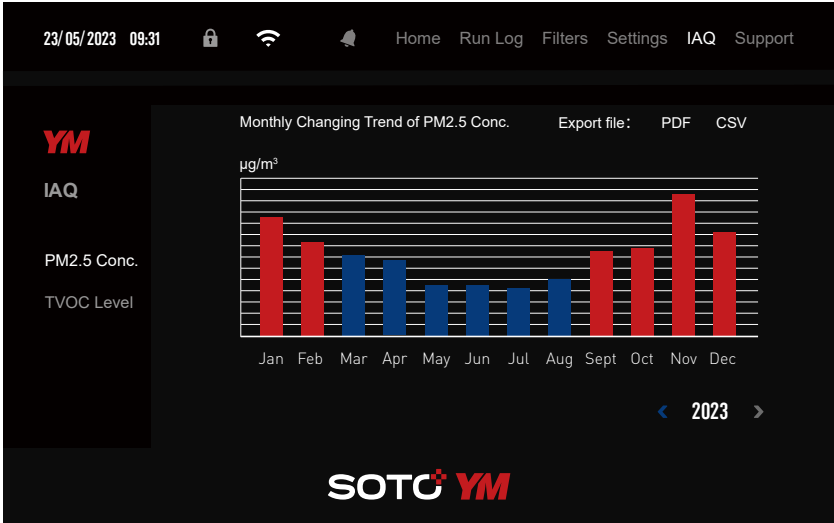


### Software Update

After the device is connected to the network, click "Update Now" to download, install, and apply the latest software version, ensuring stable and efficient system operation.

# OPERATION 6 THE EVOLVING TRENDS IN AIR POLLUTANTS

Click the IAQ option in the navigation bar to access the interface for one-year trend analysis of indoor air quality pollutants and perform the corresponding data analysis.



## Variations in Air Pollutant Levels Over a one-month Period

Click on the bar graphs in the chart to view the monthly trends in air pollutant concentrations.

## **CARE AND MAINTENANCE 1**

To ensure optimal performance of the device, regular maintenance as well as timely replacement of filters and UV lamps are required. Before conducting any maintenance procedures, always disconnect the power cord from the power source. Do not handle the plug with wet hands under any circumstances to avoid the risk of electric shock or injury.

### **Regular Maintenance**

1. Device cleaning: For residual stains or accumulated dirt on the surface of the device, it is recommended to first wipe the surface with a damp soft cloth, followed by gently drying it with a clean, dry soft cloth. The use of volatile solvents such as benzene or paint thinner is not advised, as they may damage the surface finish. When dust accumulates on the mesh of the device's air inlet, it is advisable to remove it using a vacuum cleaner or by gently wiping with a soft cleaning cloth.
2. Air outlet grille cleaning: The grille at the device's air outlet is designed to be removable. To remove it, first adjust the device's display panel to a horizontal position, insert your finger into the front gap of the grille, and gently lift it upward in a steady manner. It is recommended to clean the grille periodically with clean water and ensure it is completely dry before reinstallation to prevent moisture ingress and potential internal damage to the device.

### **Replacement of Filters and UV Lamps**

When the filters and/or UV lamps require replacement, the device screen will promptly display a notification. Additionally, users may access the "Filters" option to view detailed information regarding the service life of the filters and UV lamps.

## CARE AND MAINTENANCE 2

### Filter Replacement

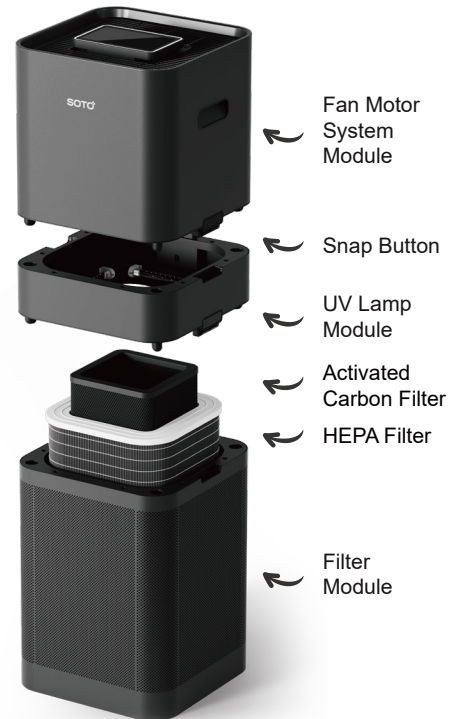
When the remaining service life of the filter falls below 3%, the system will automatically trigger a replacement alert. To ensure uninterrupted and optimal performance of the air purification function, timely filter replacement is strongly recommended.

### Procedure for Filter Replacement

1. Stop the operation and disconnect the unit from the power source.
2. Gently press the snap buttons on both sides of the top fan motor system module with your fingers, and carefully remove the module in a smooth and controlled manner.
3. Press the snap buttons located on both sides of the UV lamp module to remove it, after which the filters will become visible.
4. Remove the original filter (either the HEPA filter or the activated carbon filter) and replace it with a new one, ensuring it is properly installed in the designated location.
5. After replacing the filter, install the UV lamp module followed by the fan motor system module in sequence.

### Reset the Service Life of the Filters

After replacing a filter, the service life of the new filter must be reset. To do so, navigate to the filter management interface by selecting the "Filter" option from the navigation bar. Then, press the corresponding filter's remaining life percentage indicator to complete the reset process.



## CARE AND MAINTENANCE 3

### Replacement of the LED UV Lamps

If the remaining service life of the LED UV lamps falls below 3%, the system will automatically trigger a replacement alert. To ensure uninterrupted and optimal performance of the air disinfection function, timely replacement of the LED UV lamps is strongly recommended.

### Procedure for Replacement of the LED UV Lamps

1. Stop the operation and disconnect the power cord.
2. Remove the fan motor system module by pressing the snap buttons on both sides of the top fan motor system module to expose the LED UV lamps.
3. Carefully grasp the LED UV lamp and rotate it 90 degrees clockwise or counterclockwise to remove it safely. Install the four new lamps following the same procedure. After replacing all LED UV lamps, proceed with the installation of the fan motor system module.

### Reset the Service Life of the LED UV Lamps

It is necessary to reset the service life of the LED UV lamps following their replacement. To initiate the reset, navigate to the Filter Management interface by selecting the "Filter" option from the navigation bar. Subsequently, press the LED UV lamp's remaining life percentage indicator to complete the reset procedure.



Replacing the LED UV Lamps

## **TROUBLESHOOTING**

Many service issues that seem serious can often be fixed with simple steps. Try troubleshooting using this guide first. For all other repairs, contact an authorized service center.

### **The Device is Not Functioning**

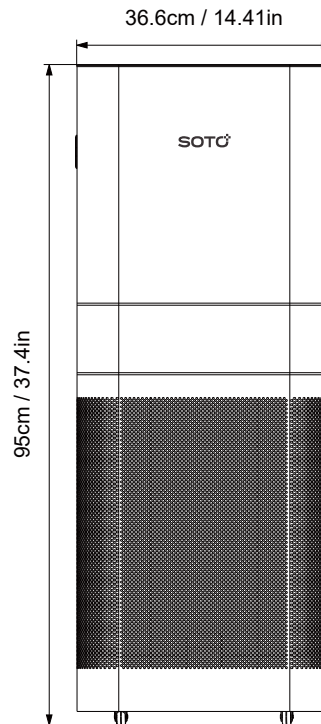
Ensure that the device is securely connected to the power source. If the connection between the power cord and the device appears to be functioning correctly, verify the operation of other electrical appliances in the vicinity to assess the stability of the power supply. In the event of a suspected power cord malfunction, contact an authorized service center without delay for replacement. Additionally, confirm that a secure connection has been established between the fan system module and the LED UV lamp module. If the connection is not properly secured, reinstall both modules carefully in accordance with the specified procedures.

### **The Purification and Disinfection Performance of the Device is Suboptimal**

Please inspect the filter surface for excessive dust accumulation and verify whether the filters or LED UV lamps have been replaced in accordance with the prescribed maintenance schedule. If necessary, clean the filter surfaces and replace the filters or LED UV lamps as required.

## SPECIFICATIONS

Product Name	Smart Air Purifier
Model No.	SOTO-YM
Power Req	220-240V, 50/60Hz
Rated Power	115W
LED UV Lamp	4x5W
Plasma	$\pm 2 \times 3 \times 10^6 / \text{cm}^3$
Dimensions	36.6cmx36.6cmxH95cm
Weight	26.5kg / 58.42lb
Power Cord	2.5m
Operation	Android Operation System
Display	PM2.5 / TVOC / Speed Timer / TEMP / RH Filters & LED UV Usage Status Scheduling / Operating Logs Filters & LED UV Replacement Notification



**SOTO AIR PURIFICATION TECHNOLOGY (LANGFANG) CO., LTD.**

Add: Certification Industrial Park, Dachang, Langfang City,  
Hebei Province, China

Customer service: +86 400-626-8883

E-mail: [customerservice@soto.com.cn](mailto:customerservice@soto.com.cn)

Web: [www.soto.cn](http://www.soto.cn)



Version 1.0